

**West Planning Community: CURRENT DATA**

**Background Summary**

Grade Level	2015/16 Official Enrollment	Overall Capacity OSFC	Overall % Utilization by Enrollment
PK-5	4,499	4,800	94%
PK-8	620	600	103%
6-8	1,593	1,853	86%
9-12	1,712	1,803	95%

Note: OSFC- Ohio School Facilities Commission, Facility Assessment Capacity

WEST PLANNING AREA			
Grade Level	# of Students Live-In	# of Students Transfer out	# of Students Transfer into
PK-5	4,599	1,656	1,481
PK-8	762	316	152
6-8	1,544	413	400
9-12	2,098	751	302

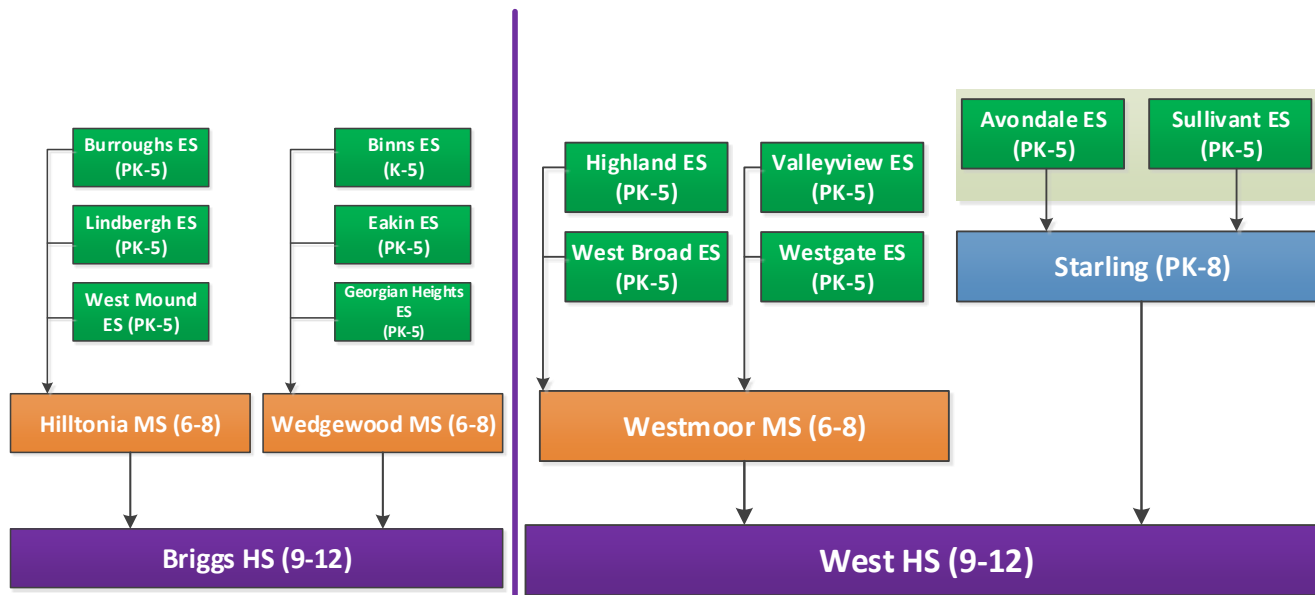
Note: DOES NOT INCLUDE STUDENTS THAT LIVE OUTSIDE CCS BOUNDARIES AND ATTEND CCS SCHOOLS

School Facilities Renovation Costs Exceeds 2/3rd Cost of Replacement (FCI)	
Eakin ES	86%
Highland ES	92%
Lindbergh ES	67%
West Broad ES	89%
Westgate Alternative	88%
Valleyview ES	79%
Hilltonia MS	75%
Westmoor MS	84%

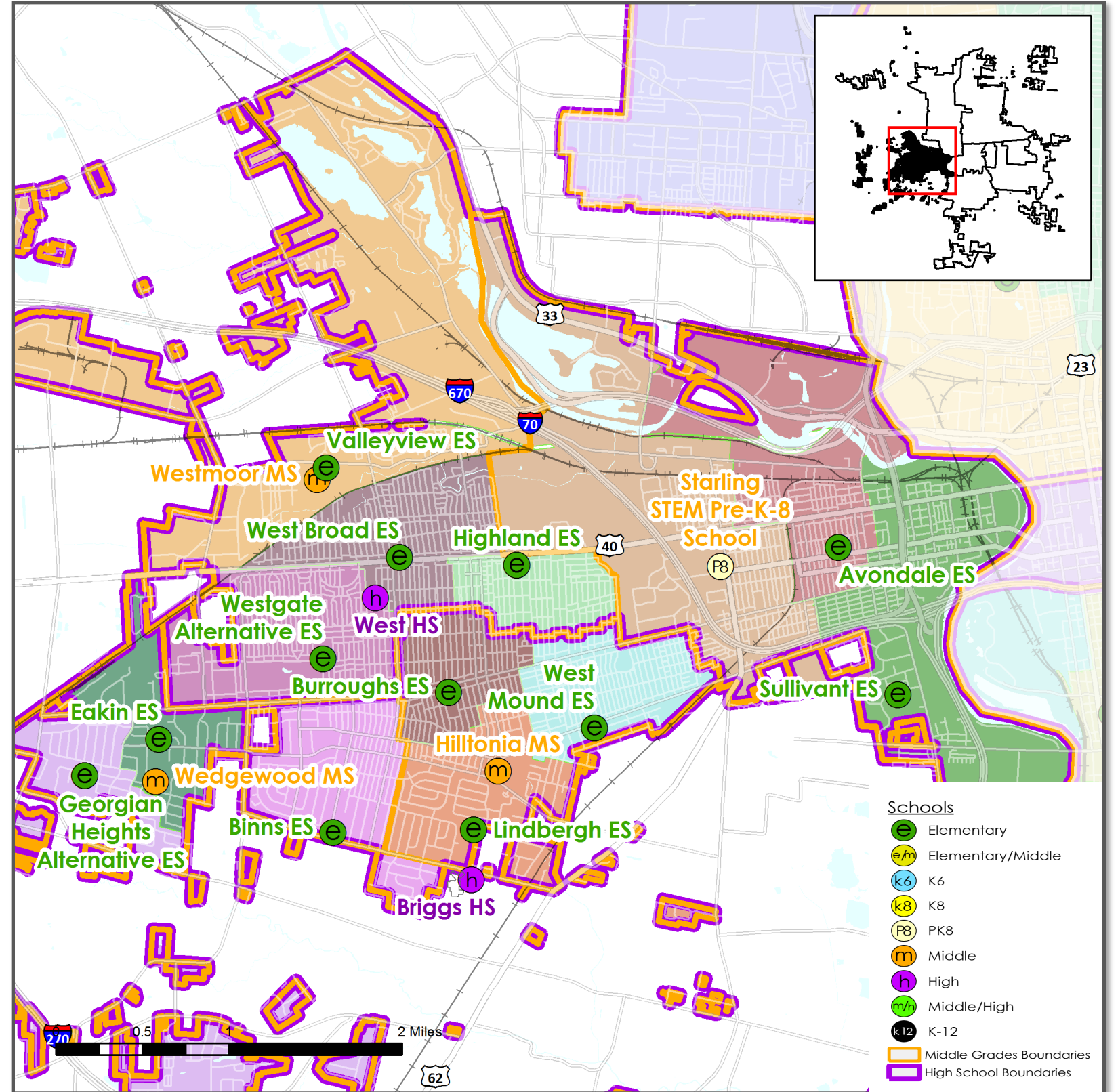
Note: Higher % = Poorer Condition

Completed Facilities	
Avondale ES	Wedgewood MS
Binns ES	
Burroughs ES	
Georgian Heights ES	
Sullivant ES	
West Mound ES	

**Current Pathways**



**West Planning Community Map**



**West Planning Community: CURRENT DATA**
**Facility Information**

Facility Name	Grade Configuration (CCS)	FMP Status	Program	Attendance Boundary	Transfer Out %		Transfer In %	OSFC Capacity (2002)	CCS Program Capacity	Adjusted Enrollment	Utilization (OSFC)	Utilization (CCS)	Modular Classrooms (CCS)
Avondale ES	PK-5	Completed	conventional	Yes	33%			400	400	290	73%	73%	
Binns ES	K-5	Completed	conventional	Yes	33%			368	368	358	97%	97%	
Burroughs ES	PK-5	Completed	conventional	Yes	37%			550	550	437	79%	79%	
Eakin ES	PK-5	Remaining	conventional	Yes	41%			256	375	327	128%	87%	
Georgian Heights Alternative ES	PK-5	Completed	regional ALT (sister to Cassidy ES and Berwick K-8), math, science, environmental studies	Yes	19%			550	550	544	99%	99%	
Highland ES	PK-5	Remaining	conventional	Yes	41%			419	486	332	79%	68%	
Lindbergh ES	PK-5	Remaining	conventional	Yes	48%			240	236	265	110%	112%	1
Sullivant ES	PK-5	Completed	conventional	Yes	47%			400	400	325	81%	81%	
Valleyview ES	PK-5	Remaining	conventional	Yes	40%			177	249	283	160%	114%	7
West Broad ES	PK-5	Remaining	conventional	Yes	40%			637	574	537	84%	94%	
West Mound ES	PK-5	Completed	conventional	Yes	28%			450	450	467	104%	104%	
Westgate Alternative ES	PK-5	Remaining	regional ALT w/assigned pop. students from South, West, Center City. physical excellence program	Yes	26%			353	487	334	95%	69%	
<b>Total / Average</b>					<b>36%</b>			<b>4,800</b>	<b>5,125</b>	<b>4,499</b>	<b>94%</b>	<b>88%</b>	<b>8</b>
Starling STEM Pre-K-8 School	PK-8	Completed	conventional w/STEM	Yes	41%			600	600	620	103%	103%	
<b>Total / Average</b>					<b>41%</b>			<b>600</b>	<b>600</b>	<b>620</b>	<b>103%</b>	<b>103%</b>	<b>0</b>
Hilltonia MS	6-8	Remaining	conventional	Yes	29%			618	547	483	78%	88%	2
Wedgewood MS	6-8	Completed	conventional	Yes	18%			600	600	534	89%	89%	
Westmoor MS	6-8	Remaining	conventional	Yes	33%			635	533	576	91%	108%	2
<b>Total / Average</b>					<b>27%</b>			<b>1,853</b>	<b>1,680</b>	<b>1,593</b>	<b>86%</b>	<b>95%</b>	<b>4</b>
Briggs HS	9-12	Remaining	conventional	Yes	35%			700	603	922	132%	153%	
West HS	9-12	Remaining	conventional	Yes	37%			1,103	963	790	72%	82%	
<b>Total / Average</b>					<b>36%</b>			<b>1,803</b>	<b>1,566</b>	<b>1,712</b>	<b>95%</b>	<b>109%</b>	<b>0</b>

**West Planning Community: CURRENT DATA**
**Facility Information**

**FCI:** Facility Condition Index, this number is found by dividing the renovation cost by the replacement cost. It is used to determine whether a school is eligible for replacement. The higher the percentage the poorer the condition of the facility. Typically when this percentage reaches 66% (2/3rd's) or higher, the building could be a candidate for replacement.

**OSFC Square Footage:** As measured by the Ohio Schools Facilities Commission, 2002

**Elementary Schools**

Facility Name	FCI 2016	Permanent Square Footage (OSFC)	Year Built (OSFC)	Site Acreage
Avondale ES	18%	51,978	2009	2.98
Binns ES	20%	46,000	2008	7.14
Burroughs ES	18%	72,430	2009	7.08
Eakin ES	86%	34,131	1960	Wedgewood site
Georgian Heights Alternative ES	10%	65,634	2012	7.95
Highland ES	92%	52,403	1895	2.57
Lindbergh ES	67%	29,975	1958	8.65
Sullivant ES	23%	50,000	2007	6.89
Valleyview ES	79%	22,146	1957	Westmoor site
West Broad ES	89%	74,581	1914	3.81
West Mound ES	23%	54,842	2007	7
Westgate Alternative ES	88%	41,324	1952	8.96

**Total / Average** **47%** **595,444**

**PK-8 School**

Facility Name	FCI 2016	Permanent Square Footage (OSFC)	Year Built (OSFC)	Site Acreage
Starling STEM Pre-K-8 School	8%	80,081	2013	10.77

**Total / Average** **8%** **80,081**

**Middle Schools**

Hilltonia MS	75%	88,824	1956	13.6
Wedgewood MS	20%	87,183	2008	19.22
Westmoor MS	84%	90,139	1958	15.53

**Total / Average** **60%** **266,146**

**High Schools**

Briggs HS	37%	116,992	1974	28.57
West HS	82%	204,641	1927	13.75

**Total / Average** **65%** **321,633**

**West Planning Community: CURRENT DATA**

**Planning Community Level Live-Attend Analysis**

This table shows where students **residing** within the West planning community attend school. For example, 76% of elementary students residing within the West planning community attend a school in the West planning community; 5% of high school students residing in the West planning community attend a school in the Northwest planning community.

Students Residing in West Planning Community		Where they are going							
		West Planning Community School	Regional or All City within West	Other Regional or All-City Program	Center City	East	Northeast	Northwest	South
Grade Level	Elementary	76%	18%	2%	2%	0%	1%	1%	1%
	Middle School	91%	0%	3%	1%	0%	0%	3%	1%
	High School	80%	0%	10%	1%	0%	2%	5%	2%
	Total Live In	80%	10%	4%	1%	0%	1%	2%	1%

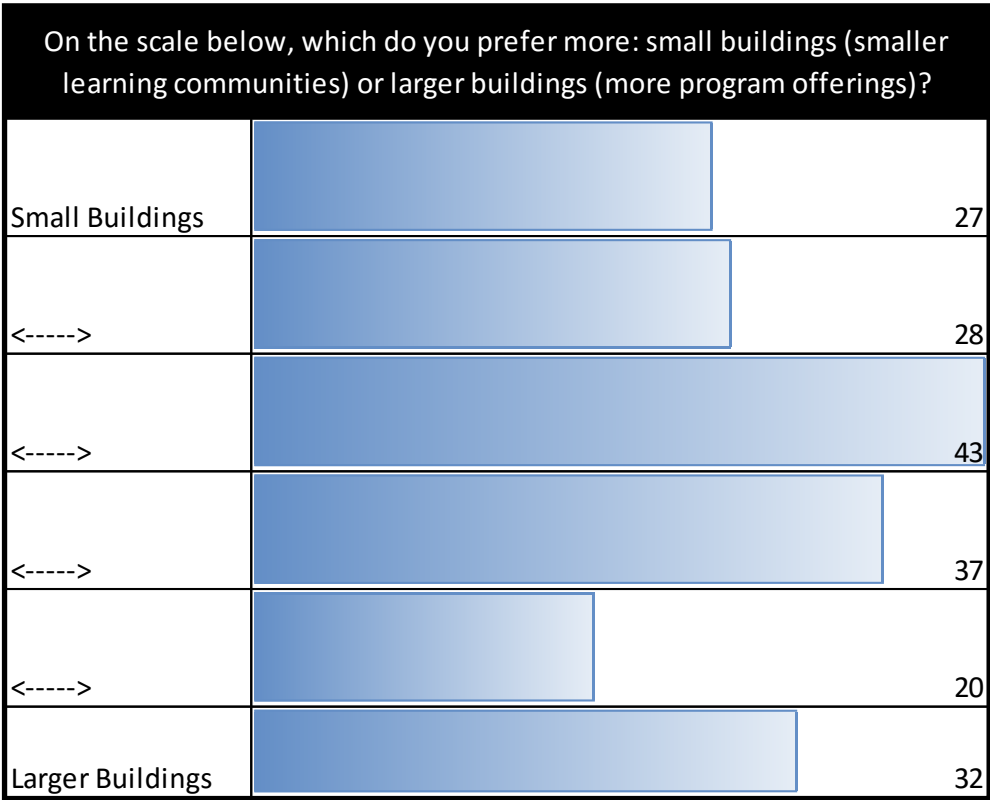
This table shows where students **attending** West planning community schools reside. For example, 96% of the students attending West planning community High Schools reside within the planning community, 1% comes from Center City, 1% from the East, 1% from the Northeast, and 1% from the South.

Students Attending West Planning Community Schools		Where they are coming from					
		West	Center City	East	Northeast	Northwest	South
Grade Level	Elementary	97%	1%	0%	0%	0%	1%
	Middle School	97%	1%	0%	1%	0%	1%
	High School	96%	1%	1%	1%	0%	1%
	Total Live In	97%	1%	0%	1%	0%	1%

**West Planning Community: CURRENT DATA**

**Selected Community Feedback Results | Zip Codes: 43204, 43228, 43222, 43223, 43123, 43119, 43215**

Which of the following grade arrangements/configurations would you support?				
	PK-5, 6-8, 9-12	PK-6, 7-12	PK-8, 9-12	PK-12 Campus
Strongly Support	104	21	30	15
Support	52	51	48	23
No Opinion	8	15	14	20
Do Not Support	8	45	37	40
Strongly Do Not Support	1	17	24	50



Which of the following do you recommend for schools that are overcrowded? Please check all that apply.

Change the grade arrangement (move a grade out of a school - example change from a K - 5 to a K - 4 building)	77
Renovate and/or build a school	112
Reassign some of the students to another school	51
Change attendance boundaries of nearby schools	76
None of the above/No opinion	7

There are spaces within a school that the State of Ohio does not provide funding for. These projects are typically funded by local taxes. As a local tax payer, how important do you believe the following spaces are in schools?

	Auditoriums (Middle School)	Auditoriums (High School)	Outdoor athletic facilities (stadiums, tracks, football fields, soCber fields, etc.)	Tennis courts	Larger gymnasiums (High School)	Adult Education	Outdoor Education Center/Camp	Indoor Swimming Pool	Non-school facilities (bus garage, food service production center, etc.)	Land for schools to be built on	Preserve historic buildings	Centralized student health clinic
Important	148	172	160	75	131	91	79	42	141	127	104	113
No Opinion	22	11	22	65	38	60	58	42	36	42	54	49
Not Important	18	2	7	41	12	35	47	98	9	18	28	23