



Columbus City Schools

*Learn. Dream. Succeed.*

Columbus City Schools  
Ad Hoc Committee Meeting  
January 9, 2016



*FutureThink*

Formerly DeJONG-HEALY



## Enrollment Projections Overview

- June 2015, District-Wide Projections Completed
- December 2015, By School Projections Completed
- Projections through OSFC since 2000 with updates
- Last update was in June 2011
- Projected vs. Actual enrollment for 2014-15 within 1%

**June 2011 Enrollment Projection**

<b>2011-12</b>	<b>2012-13</b>	<b>2013-14</b>	<b>2014-15</b>
50,281	49,689	49,532	49,622
-84	-573	-918	-555
-0.17%	-1.14%	-1.82%	-1.11%



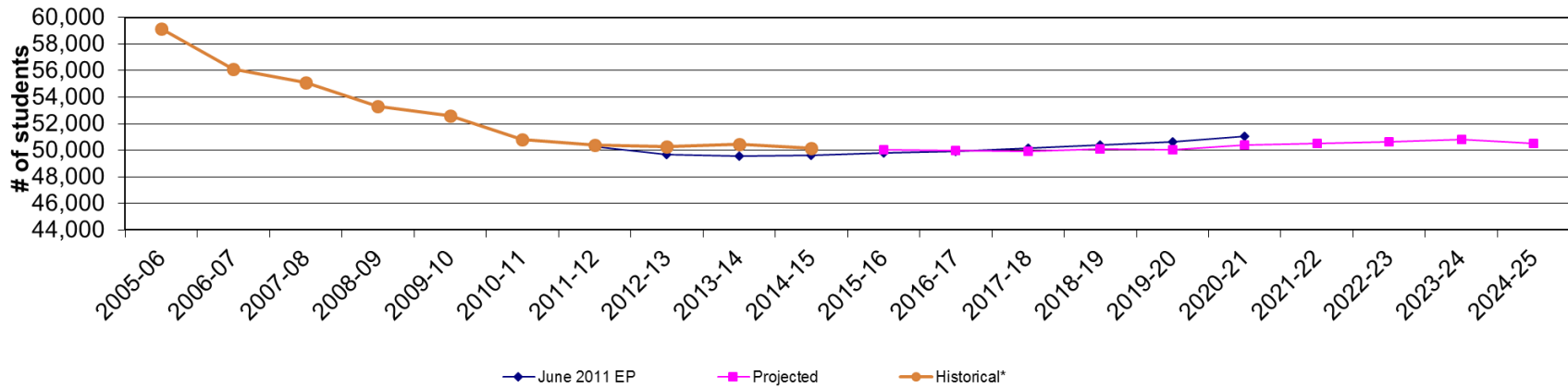


# Columbus City Schools

*Learn. Dream. Succeed.*

## Enrollment Projections Overview

Columbus Public School District Historical/Projected Enrollment Comparison



**FutureThink**

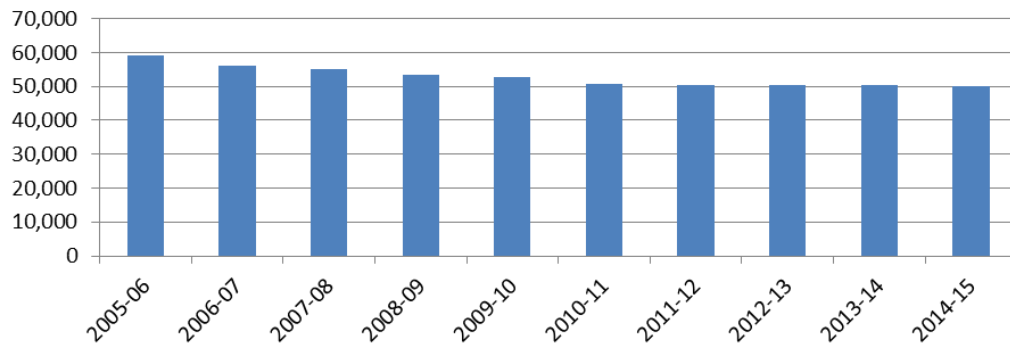
Formerly DeJONG-HEALY



## Enrollment Projections Considerations

- Historical Enrollment
- Birth Data
- Community School Enrollment
- Open Enrollment
- General Population & Economic Demographics
- Housing Development

Columbus City School District  
Historical Enrollment





# Columbus City Schools

*Learn. Dream. Succeed.*

Historical Enrollment – down 15% over 10 years,  
but has stabilized over last 4 years.

## Columbus City School District Historical Enrollment

Grade	2005-06	2006-07	2007-08	2008-09	2009-10	2010-11	2011-12	2012-13	2013-14	2014-15
Pre-K	762	868	927	933	931	787	897	722	920	874
K	4,961	4,546	4,434	4,366	4,480	4,580	4,732	4,900	4,820	4,931
1	4,845	4,703	4,483	4,310	4,309	4,320	4,469	4,621	4,725	4,654
2	4,752	4,531	4,477	4,266	4,205	4,175	4,131	4,345	4,428	4,590
3	4,593	4,459	4,328	4,297	4,230	4,041	4,043	4,038	4,226	4,768
4	4,423	4,328	4,255	4,146	4,166	4,111	3,961	3,931	3,996	3,719
5	4,464	4,196	4,077	4,067	4,083	3,967	3,963	3,852	3,825	3,812
6	4,449	4,053	3,794	3,713	3,682	3,620	3,533	3,540	3,488	3,304
7	4,724	4,220	3,954	3,671	3,630	3,513	3,544	3,477	3,381	3,384
8	4,655	4,424	4,159	3,877	3,590	3,393	3,359	3,458	3,407	3,401
9	6,140	5,995	6,020	5,397	4,952	4,617	4,404	4,514	4,458	4,436
10	4,068	3,810	3,908	3,901	3,814	3,495	3,431	3,220	3,316	3,205
11	3,324	3,325	3,397	3,367	3,469	3,375	3,053	3,167	2,939	2,775
12	2,960	2,592	2,887	3,016	3,039	2,798	2,805	2,445	2,492	2,288
Pre-K - 12 Total	59,120	56,050	55,100	53,327	52,580	50,792	50,325	50,230	50,421	50,141
Ungraded	1	32	0	0	18	29	40	32	29	36
Grand Total	59,121	56,082	55,100	53,327	52,598	50,821	50,365	50,262	50,450	50,177

Source: Ohio Department of Education, EMIS; Columbus City School District

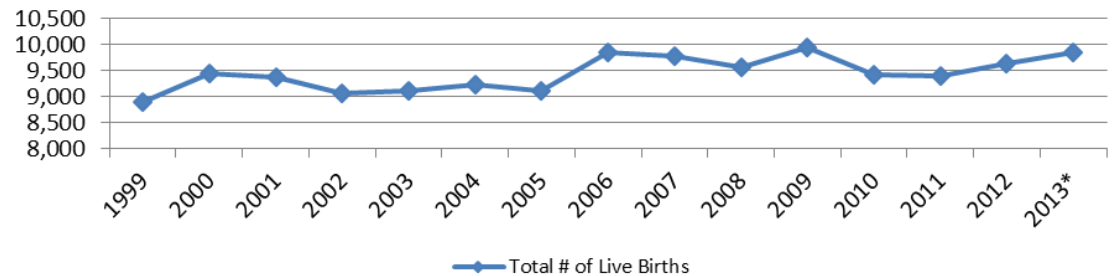


## Birth Counts—determine Kindergarten survival ratios & help in projecting future K classes

**Columbus City School District  
Live Birth Counts  
1999-2013**

Year	Total # of Live Births
1999	8,895
2000	9,433
2001	9,380
2002	9,071
2003	9,096
2004	9,230
2005	9,107
2006	9,841
2007	9,778
2008	9,563
2009	9,947
2010	9,411
2011	9,388
2012	9,639
2013*	9,834

**Columbus City School District  
Live Birth Counts**



Source: Ohio Department of Health, Statistical Analysis Unit

\*preliminary





# Columbus City Schools

*Learn. Dream. Succeed.*

Survival Ratios reflect the movement of students, grade by grade, year by year.

from	to	birth -> K	K->1	1->2	2->3	3->4	4->5	5->6	6->7	7->8	8->9	9->10	10->11	11->12
2005	2006	48.5%	94.8%	93.5%	93.8%	94.2%	94.9%	90.8%	94.9%	93.6%	128.8%	62.1%	81.7%	78.0%
2006	2007	48.9%	98.6%	95.2%	95.5%	95.4%	94.2%	90.4%	97.6%	98.6%	136.1%	65.2%	89.2%	86.8%
2007	2008	48.0%	97.2%	95.2%	96.0%	95.8%	95.6%	91.1%	96.8%	98.1%	129.8%	64.8%	86.2%	88.8%
2008	2009	48.5%	98.7%	97.6%	99.2%	97.0%	98.5%	90.5%	97.8%	97.8%	127.7%	70.7%	88.9%	90.3%
2009	2010	50.3%	96.4%	96.9%	96.1%	97.2%	95.2%	88.7%	95.4%	93.5%	128.6%	70.6%	88.5%	80.7%
2010	2011	48.1%	97.6%	95.6%	96.8%	98.0%	96.4%	89.1%	97.9%	95.6%	129.8%	74.3%	87.4%	83.1%
2011	2012	50.1%	97.7%	97.2%	97.7%	97.2%	97.2%	89.3%	98.4%	97.6%	134.4%	73.1%	92.3%	80.1%
2012	2013	50.4%	96.4%	95.8%	97.3%	99.0%	97.3%	90.6%	95.5%	98.0%	128.9%	73.5%	91.3%	78.7%
2013	2014	49.6%	96.6%	97.1%	107.7%	88.0%	95.4%	86.4%	97.0%	100.6%	130.2%	71.9%	83.7%	77.8%
	average	49.15%	97.106%	96.02%	97.8%	95.76%	96.1%	89.6%	96.8%	97.0%	130.474%	69.563%	87.676%	82.693%
	standard deviation	0.904%	1.148%	1.235%	3.768%	3.048%	1.299%	1.400%	1.191%	2.210%	2.667%	4.167%	3.205%	4.525%

*K>1 - 7>8 at 96-97% on average, except 5>6.*



*FutureThink*

Formerly DeJONG-HEALY



## Community School Enrollment – approximately 17,000 last 2 years

### Columbus City School District Community School Enrollment

Grade	2005-06	2006-07	2007-08	2008-09	2009-10	2010-11	2011-12	2012-13	2013-14	2014-15
Pre-K	0	0	0	0	0	0	0	0	0	0
K	605	1,114	1,057	1,242	1,322	1,408	1,553	1,715	1,722	1,672
1	538	979	994	1,017	1,278	1,282	1,181	1,482	1,569	1,492
2	473	822	869	1,001	1,048	1,210	1,041	1,248	1,452	1,316
3	398	757	764	862	1,003	1,046	1,041	1,119	1,221	1,382
4	302	675	744	780	909	989	902	1,083	1,139	984
5	329	655	678	788	847	973	881	1,017	1,091	1,034
6	461	830	828	903	1,162	1,190	1,115	1,252	1,395	1,417
7	470	886	827	788	999	1,158	1,008	1,137	1,277	1,277
8	493	821	855	784	947	999	920	1,020	1,148	1,164
9	1,887	2,545	2,769	1,969	2,643	2,082	1,378	1,457	1,630	1,686
10	854	1,098	1,220	1,114	1,465	1,366	1,016	1,060	1,314	1,439
11	784	785	867	818	1,136	1,141	1,181	1,218	1,333	1,255
12	562	533	581	609	984	960	868	986	944	852
Ungraded	323	566	402	222	308	327	5	6	7	3
<b>Grand Total</b>	<b>8,479</b>	<b>13,066</b>	<b>13,455</b>	<b>12,897</b>	<b>16,051</b>	<b>16,131</b>	<b>14,090</b>	<b>15,800</b>	<b>17,242</b>	<b>16,973</b>

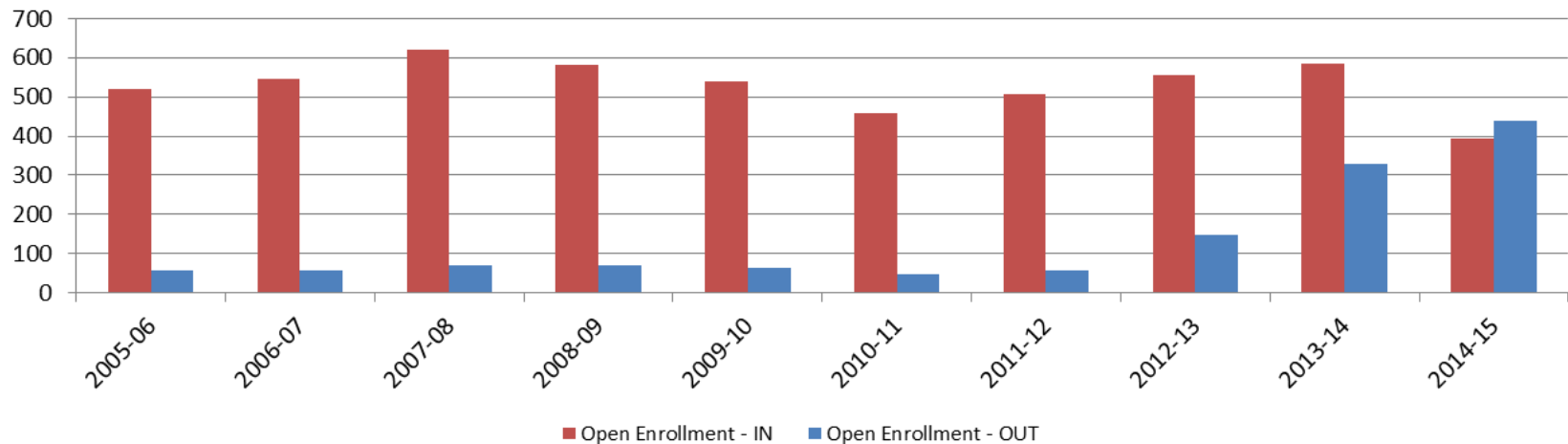
Source: Ohio Department of Education, EMIS; Columbus City School District





*Open Enrollment – in and out enrollment fairly equal last year at approximately 400 students.*

**Columbus Public School District  
Open Enrollment**





## Building Permits – seeing increases in recent years

**# of Building Permits Issued for Single Family Dwellings**

Year	Columbus	Franklin County
2004	2,687	5,220
2005	2,360	4,446
2006	1,223	2,707
2007	1,008	2,094
2008	686	1,286
2009	852	1,464
2010	716	1,628
2011	667	1,200
2012	723	1,372
2013	770	1,497
2014	724	1,695
2015*	672	1,353

Source: SOCDs Building Permits Database

\*preliminary data through November 2015

data for Columbus includes portions in Delaware & Fairfield counties

**# of Building Permits Issued for Multi Family Dwellings**

Year	Columbus	Franklin County
2004	1,753	1,866
2005	2,224	2,838
2006	1,345	1,932
2007	1,698	1,873
2008	1,326	1,500
2009	1,354	1,425
2010	1,391	1,491
2011	1,642	2,175
2012	3,286	3,492
2013	3,565	4,590
2014	2,918	3,386
2015*	2,942	3,621

Source: SOCDs Building Permits Database

\*preliminary data through November 2015

data for Columbus includes portions in Delaware & Fairfield counties

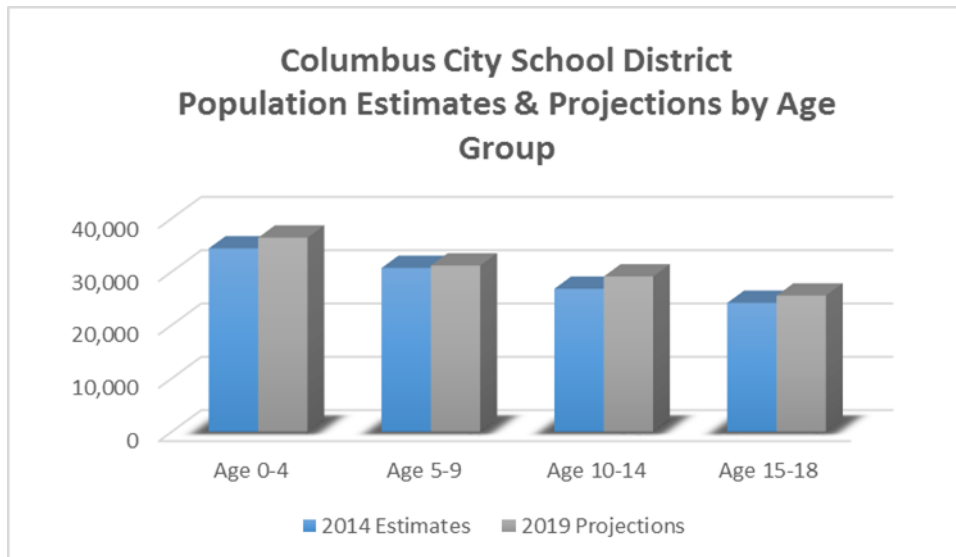




## Population Projections – increase of 5%

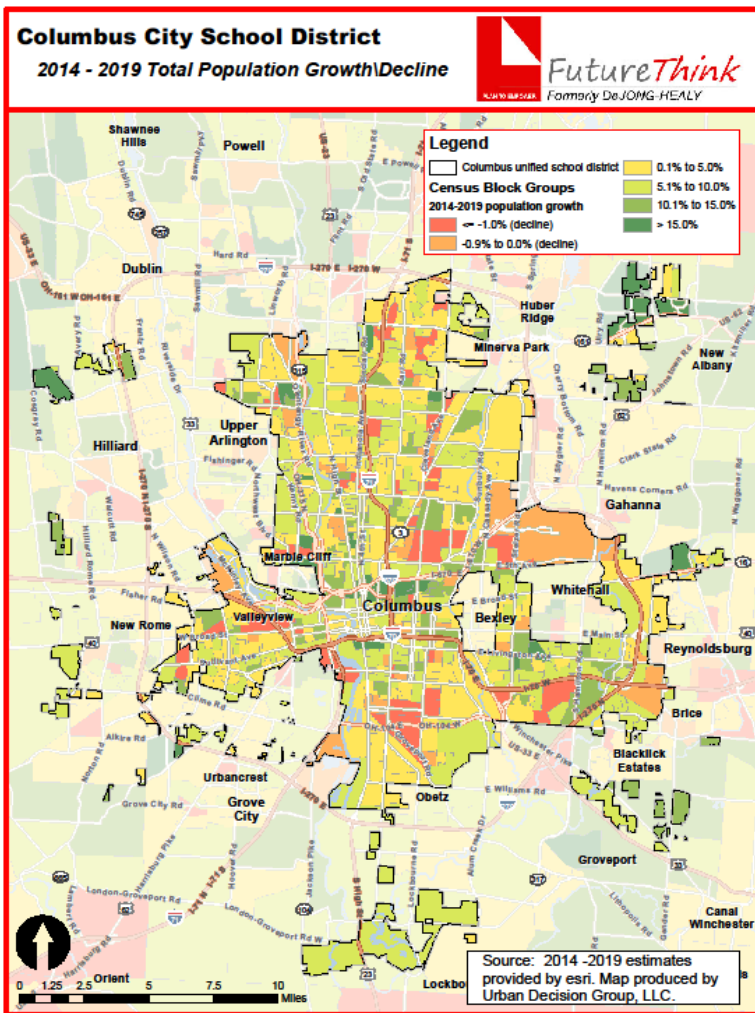
Columbus City School District	2014 Estimates	2019 Projections	Change 2014-19	Change 2014-19 (%)
Total Population	519,639	548,609	28,970	5.6%
Age 0-4	34,386	36,405	2,019	5.9%
Age 5-9	30,719	31,185	466	1.5%
Age 10-14	26,814	29,111	2,297	8.6%
Age 15-18	24,159	25,535	1,376	5.7%
Total Age 0-18	116,078	122,236	6,158	5.3%
Median Age	32.0	32.5	0.5	1.6%

Source: ESRI





## Population Projections, Total Population

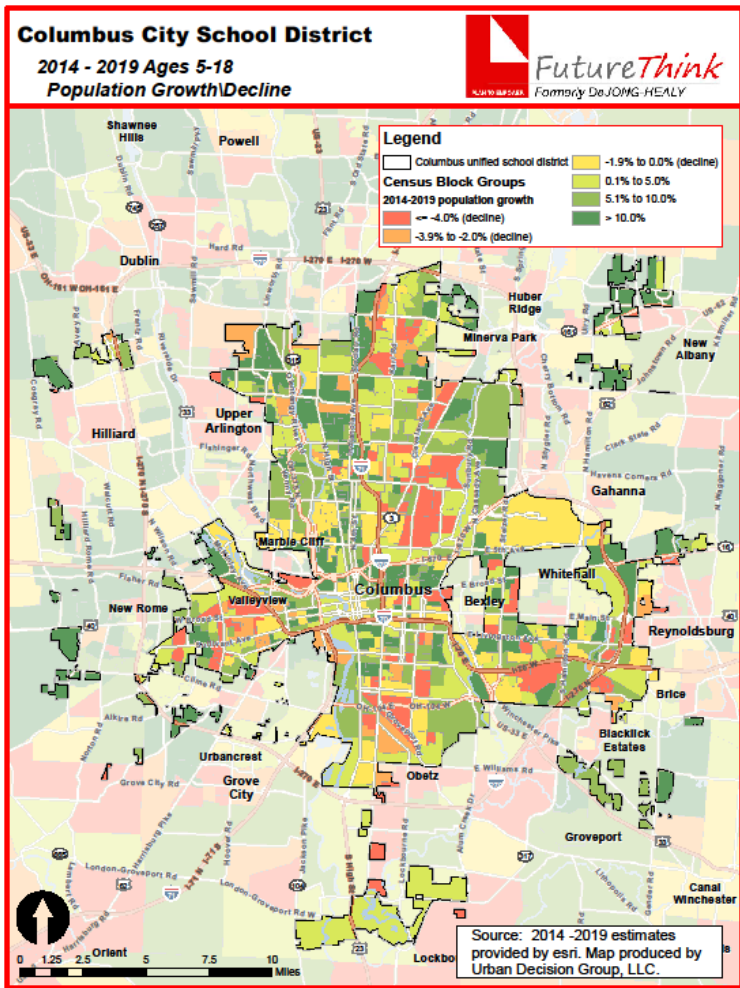


Red & Orange indicate areas of decline.

Yellow & Green indicate areas of growth.



## Population Projections, Ages 5-18



Red, Orange & Yellow indicate areas of decline.

Green indicates areas of growth.



## Household Income & Family Household Projections

Columbus City School District	2014 Estimates	2019 Projections	Change 2014-19	Change 2014-19 (%)
Median Household Income	\$35,607	\$40,957	\$5,350	15.0%
Average Household Income	\$48,989	\$55,419	\$6,430	13.1%
Average Family Size	2.98	2.98	0.00	0.0%
Total Family Households	108,090	112,389	4,299	4.0%

Source: ESRI

State of Ohio	2014 Estimates	2019 Projections	Change 2014-19	Change 2014-19 (%)
Median Household Income	\$47,601	\$55,358	\$7,757	16.3%
Average Household Income	\$64,369	\$72,498	\$8,129	12.6%
Average Family Size	3.00	2.99	-0.01	-0.3%
Total Family Households	2,978,656	2,977,921	-735	0.0%

Source: ESRI





# Columbus City Schools

*Learn. Dream. Succeed.*

## Projected Enrollment – stabilize over next 10 years

### Columbus City School District Projected Enrollment

Grade	2014-15 Actual	2015-16	2016-17	2017-18	2018-19	2019-20	2020-21	2021-22	2022-23	2023-24	2024-25
Pre-K	884	867	864	888	906	888	888	888	888	888	888
K	4,931	4,706	4,694	4,820	4,917	4,822	4,822	4,822	4,822	4,822	4,822
1	4,654	4,782	4,564	4,552	4,674	4,769	4,677	4,677	4,677	4,677	4,677
2	4,590	4,475	4,598	4,388	4,377	4,494	4,585	4,497	4,497	4,497	4,497
3	4,768	4,450	4,339	4,458	4,254	4,244	4,357	4,445	4,359	4,359	4,359
4	3,719	4,537	4,234	4,128	4,242	4,048	4,038	4,146	4,230	4,148	4,148
5	3,812	3,571	4,356	4,065	3,963	4,072	3,886	3,876	3,980	4,060	3,982
6	3,304	3,428	3,210	3,916	3,655	3,563	3,661	3,494	3,485	3,578	3,651
7	3,384	3,205	3,325	3,114	3,799	3,545	3,456	3,551	3,389	3,381	3,471
8	3,401	3,303	3,128	3,245	3,039	3,708	3,460	3,373	3,466	3,307	3,299
9	4,436	4,463	4,334	4,104	4,257	3,987	4,864	4,539	4,426	4,547	4,339
10	3,205	3,192	3,211	3,118	2,953	3,063	2,869	3,500	3,266	3,184	3,271
11	2,775	2,821	2,809	2,826	2,744	2,599	2,696	2,525	3,080	2,875	2,803
12	2,288	2,215	2,252	2,242	2,256	2,190	2,074	2,152	2,015	2,458	2,294
Pre-K - 12 Total	50,151	50,015	49,918	49,864	50,036	49,992	50,333	50,485	50,580	50,781	50,501
Ungraded	36	33	33	33	33	33	33	33	33	33	33
Grand Total	50,187	50,048	49,951	49,897	50,069	50,025	50,366	50,518	50,613	50,814	50,534

Source: FutureThink



## Enrollment Projections by School

- Used same methodology for each school projection.
- Followed high school feeder patterns when applicable.
- Based on where students attend school not where they live.
- Survival ratios developed for each school – can identify potential trends regarding particular schools.







## Enrollment Projections Going Forward

- Will need to continue to monitor all factors (housing, births, etc.) and their impact on enrollment.
- Projections are only as accurate as the data available at a given point in time.
- As variables change, the projections should be modified.
- Projections provide a road map for decision-making; they don't provide the decisions.





Columbus City Schools

*Learn. Dream. Succeed.*

*Questions?*



*FutureThink*

Formerly DeJONG-HEALY

PLAN TO EMPOWER